



Foundations EKG II - Unit 8, Case 32

77 y/o M with PMH of HTN, DM presents for chest pressure radiating to both arms, and dyspnea, that occurred while raking leaves.

HR: 90 BP: 100/60

RR: 18 O2 Sat: 98%

What is your interpretation of the EKG?

History/Clinical Picture

Rate

Rhythm

Axis

P Waves

Q/R/S Waves

T Waves

U Waves

PR Interval

QRS Width

ST Segment

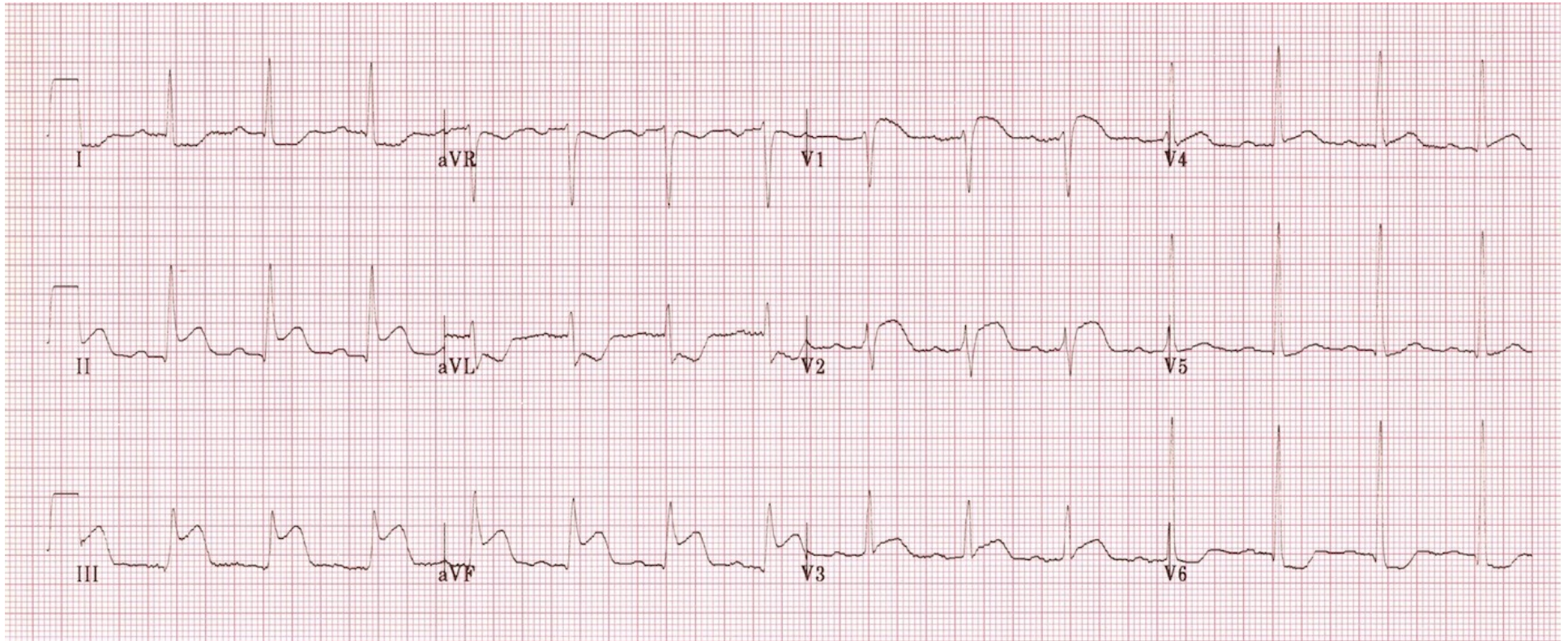
QT Interval

What is your first step in the management of this patient?

What medication is contraindicated in this situation?

If the patient developed worsening hypotension, what would be your first step?

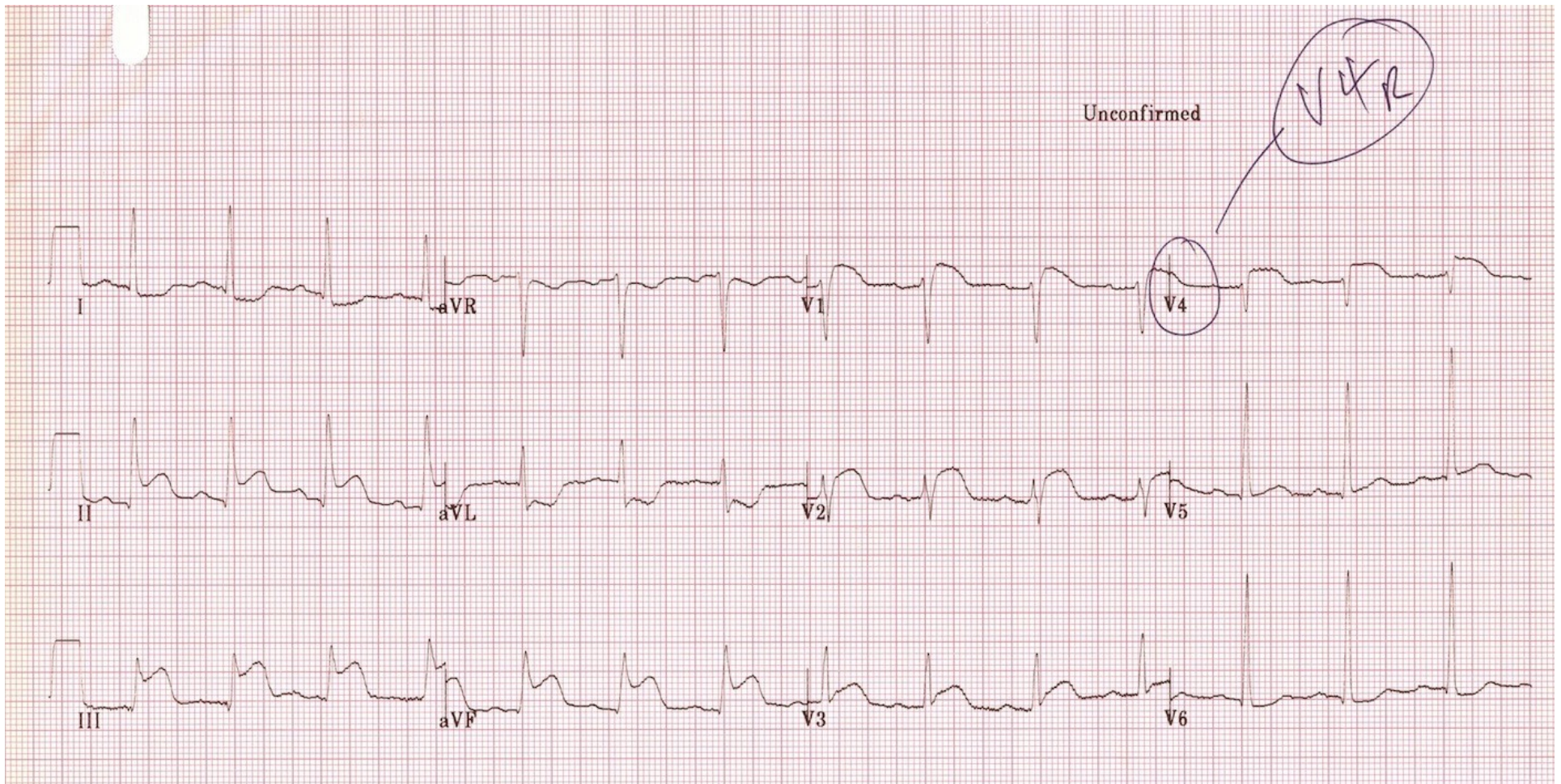
Triage EKG



Courtesy of Edward Burns of [Life in the Fast Lane](#)

[Creative Commons License](#)

Repeat EKG



In the above EKG lead V4 is right sided

Courtesy of Edward Burns of [Life in the Fast Lane](#)

[Creative Commons License](#)