



## Foundations EKG II - Unit 8, Case 29

*51 y/o F with PMH of SLE presents via EMS following a PEA arrest while running a marathon. She was intubated in the field and received three rounds of CPR and epinephrine before ROSC.*

HR: 115      BP: 90/50

RR: 12      O2 Sat: 99%

### **What is your interpretation of the EKG?**

History/Clinical Picture

Rate

Rhythm

Axis

P Waves

Q/R/S Waves

T Waves

U Waves

PR Interval

QRS Width

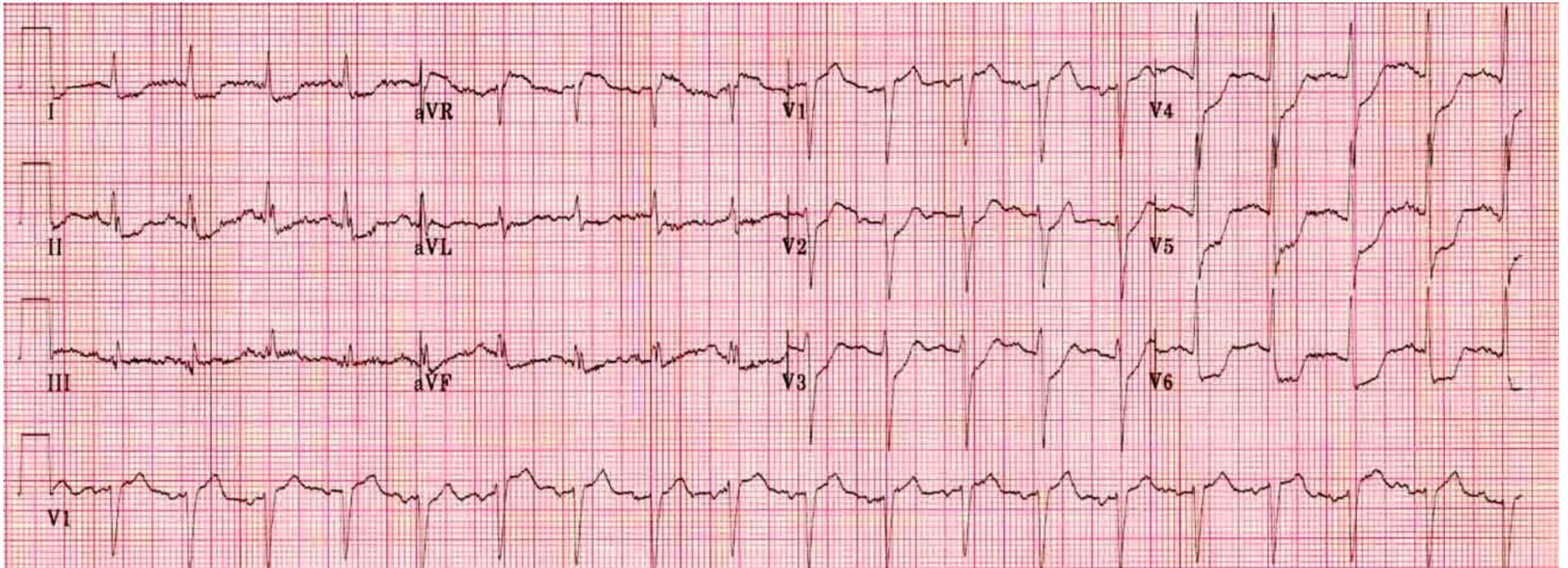
ST Segment

QT Interval

**What is your differential diagnosis for these EKG findings?**

**How would you manage this patient in the ED?**

# Triage EKG



Courtesy of Edward Burns of [Life in the Fast Lane](#)

[Creative Commons License](#)